

AIRFOIL



GRILLES
DUCT
FITTINGS

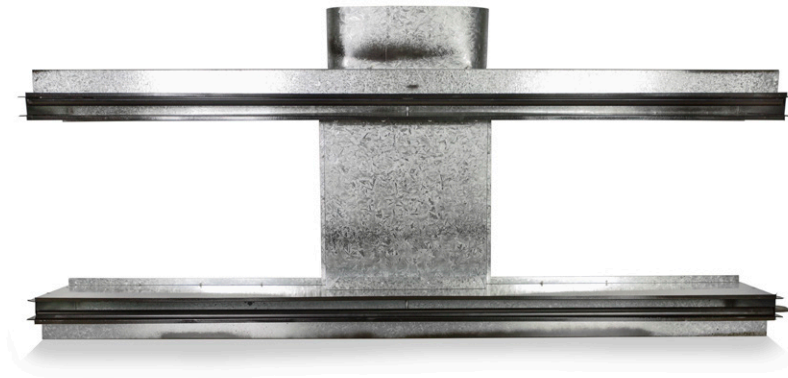
making it happen sooner...



Quality
Endorsed
Company
ISO 9001
 SAI GLOBAL



**DOUBLE LIGHT
AIR BOOT
D-LAB**



DOUBLE LIGHT AIR BOOT D-LAB

PRODUCT DESCRIPTION AND APPLICATION

Airfoil's Australian Made and Designed Double Light Air Boot Diffuser (D-LAB) discreetly diffuses air with precision. Crafted from mild steel, each Double Light Air Boot is custom-tailored to complement chosen light fixtures, ensuring seamless integration from project to project. Its surface-mounting or regressed application versatility, coupled with a scratch-proof black powder-coated finish, offers both practicality and durability.

Featuring a unique airflow crossover and integrated volume control device, the Double Light Air Boot Diffuser enables effortless manual air balancing, while pattern control devices allow for simple adjustment from below the ceiling line. This efficient air diffusion solution excels in managing varying temperature differentials and effectively diffusing large air volumes with minimal sound pressure.

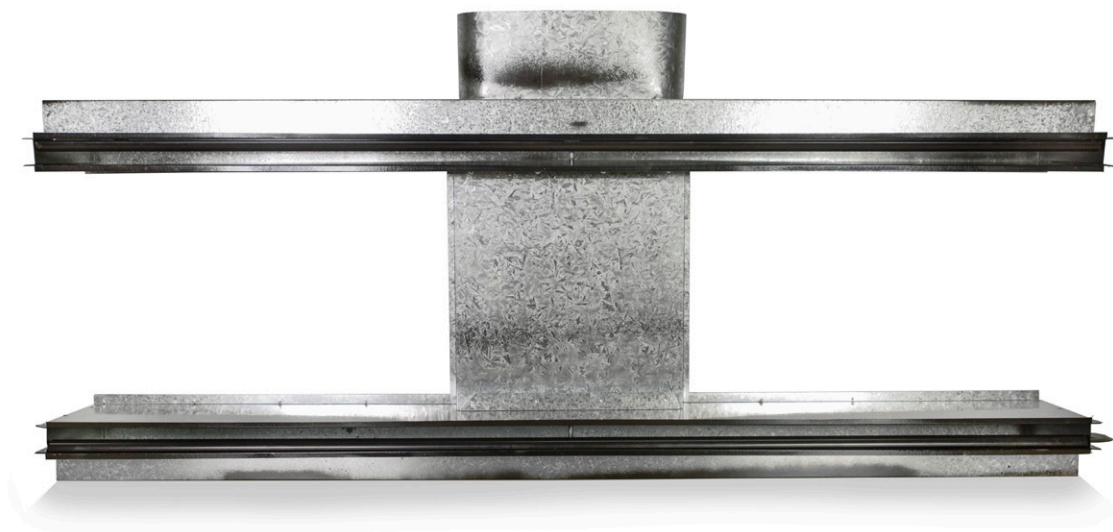
Notably, the Double Light Air Boot Diffuser's flexibility seamlessly integrates with any office partition layout compatible with its lighting system. Prior to ordering, thorough discussions regarding light fixture specifics and desired D-LAB performance characteristics are strongly advised.

While the Performance Data serves as a helpful reference, large-scale projects may necessitate additional testing to ensure optimal performance beyond the provided data.

DOUBLE LIGHT AIR BOOT D-LAB

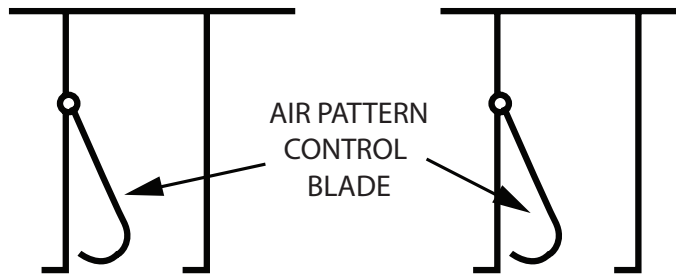
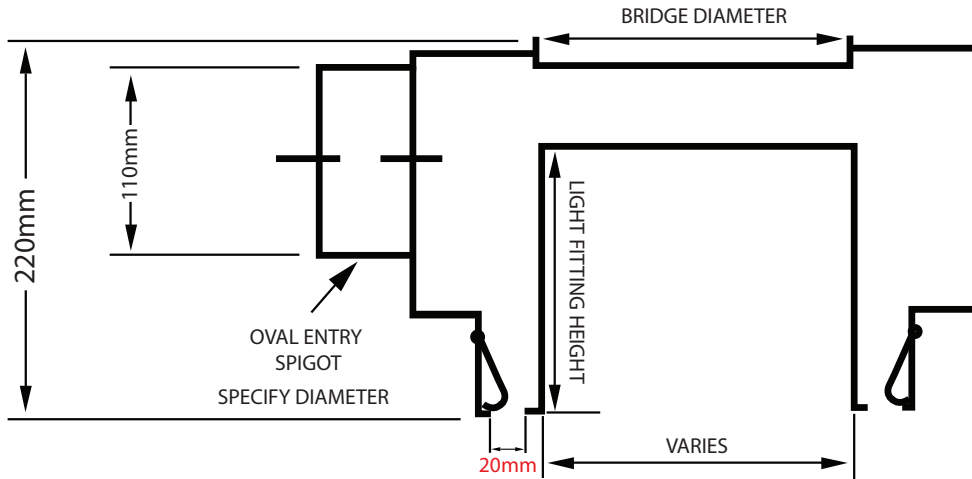
PRODUCT SPECIFICATIONS AND INFORMATION

- **Product ordering code – D-LAB**
- Australian Made and Designed
- Manufactured from galvanised 0.6mm steel
- Custom manufactured to suit each particular light fitting
- Slot opening 20mm
- Standard height 220mm
- Spigot sizes available are 150mm and 200mm diameters
- Mounted within the light fitting
- “J” Blade volume control device fitted for manual air balancing
- Low sound pressure levels
- Black powder coated face finish for scratch resistance
- Used for supply air diffusion for heating and cooling
- Airfoil tested information available
- Product tested at 1200mm and 600mm lengths
- **The following metric performance data has been derived from exhaustive testing in elaborate laboratories of acoustic and vibrational engineers Louis A. Challis and Associates Proprietary Limited. Darling Street, Sydney 2000**

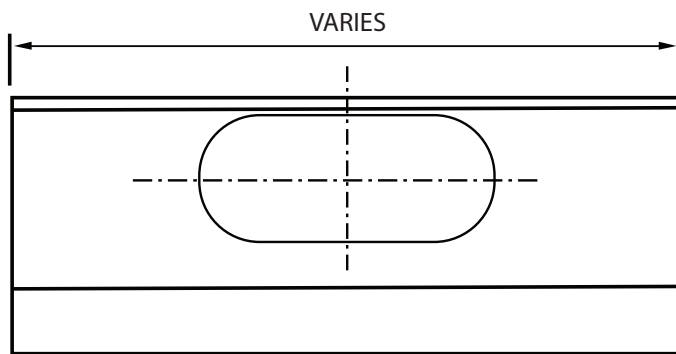


DOUBLE LIGHT AIR BOOT D-LAB

CROSS SECTIONAL DIAGRAM



SLOT ARRANGEMENTS
TO SUIT LIGHT FITTING



DISCLAIMER:

All product designs, data sheets and specifications presented herein are the intellectual property of Airfoil Manufacturing Pty Ltd. These designs and specifications, including but not limited to diagrams, drawings, and performance data, are protected under Australian intellectual property laws. No part of these designs and specifications may be copied, reproduced, distributed, or transmitted in any form or by any means without the prior written permission of Airfoil Manufacturing Pty Ltd. Unauthorised use or reproduction of these materials may result in legal action under Australian copyright and intellectual property laws.

DOUBLE LIGHT AIR BOOT D-LAB

PERFORMANCE DATA

Volume		L/s	60	70	80	90	95
Throw/Side Metres		H	1.2	1.6	1.8	2.2	2.8
		V	0.9	1.2	1.2	1.5	1.5
200 Dia	Total Press Pa		15	16	17	25	37
Side Entry	NR dB		20	22	24	30	35

This performance data has been compiled from actual test data for the Double Light Air Boot Diffuser with “J” blade pattern controller and nominal dimensions: **1200mm** long, **20mm** slot width, tested with the light fitting.

NOTE: Throw to Terminal Velocity of 0.5m/s
NR dB values are based on a Room Absorption of 8dB re. 10⁻¹² Watts

Volume		L/s	45	50	65	75	85
Throw/Side Metres		H	1.5	2.2	2.3	2.5	3.0
		V	0.9	0.9	1.2	1.2	1.2
150 Dia	Total Press Pa		19	26	38	48	63
Side Entry	NR dB		22	26	32	37	40

This performance data has been compiled from actual test data for the Double Light Air Boot Diffuser with “J” blade pattern controller and nominal dimensions: **600mm** long, **20mm** slot width tested with the light fitting

NOTE: Throw to Terminal Velocity of 0.5m/s
NR dB values are based on a Room Absorption of 8dB re. 10⁻¹² Watts