

AIRFOIL

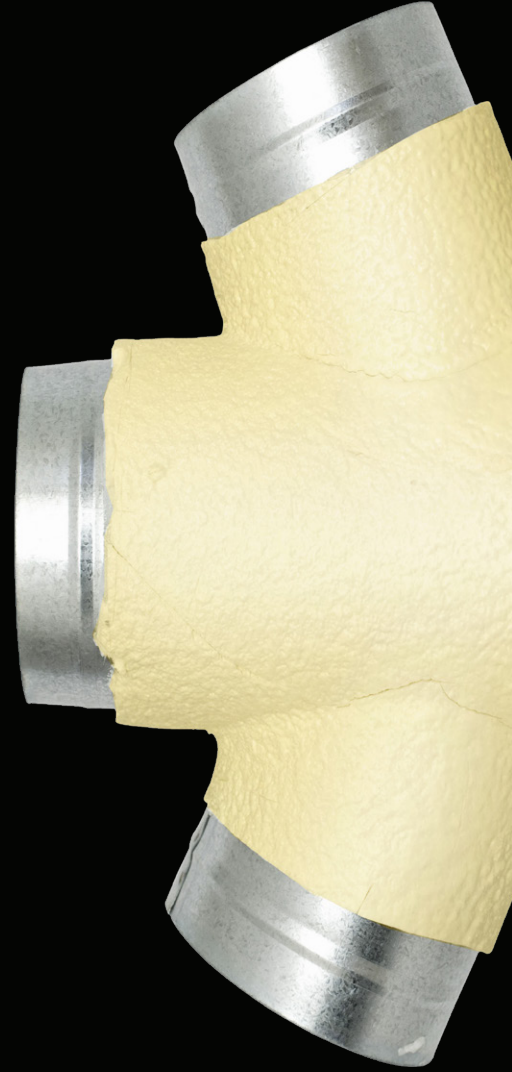


GRILLES
DUCT
FITTINGS

making it happen sooner...



Quality
Endorsed
Company
ISO 9001
 SAI GLOBAL



**METAL DOUBLE BRANCH
TAKE OFF DUCT FITTING
DBTO**



METAL DOUBLE BRANCH TAKE OFF DUCT FITTING DBTO

PRODUCT DESCRIPTION AND APPLICATION

Airfoil's Double Branch Take Off Duct Fitting (DBTO), proudly Australian Made, are meticulously crafted from premium 0.55mm Australian Galvanised sheet metal and come standard with insulation.

The Double Branch Take Off Duct Fitting is designed for attaching flexible ducts, ensuring the efficient delivery of supply and return air according to specific configuration plans.

Available in various duct diameter spigot sizes, this versatile Double Branch Take Off Duct Fitting is perfect for balancing and distributing airflow within any building. The DBTO is also available with optional manual metal Volume Control Damper Blade (VCB), offering direct control to air flow.

Suited for both commercial and domestic environments where thermal and acoustic considerations are vital, it stands as a testament to Airfoil's commitment to providing top-quality Sheet Metal solutions.

METAL DOUBLE BRANCH TAKE OFF DUCT FITTING DBTO

PRODUCT SPECIFICATIONS AND INFORMATION

- **Product ordering code – DBTO**
- Australian Made and Designed
- Available in a variety of manufactured spigot sizes
- Manufactured from 0.55mm Australian galvanised steel
- Light weight
- Available with optional Volume Control Damper Blade fitted (VCD)
- Mounted to flexible duct work in ceiling spaces
- Acoustic qualities
- Thermal qualities
- Used for supply and return air for heating and cooling
- Perfect for balancing and distributing airflow within any building space
- Suitable for commercial and domestic environments where thermal and acoustic considerations are vital



METAL DOUBLE BRANCH TAKE OFF DUCT FITTING DBTO

ORDERING CODES

PRODUCT ORDERING CODES	
DBTO8666 METAL	Branch Take Off Fittings Insulated Metal 8" x 6" x 6" x 6"
DBTO8866 METAL	Branch Take Off Fittings Insulated Metal 8" x 8" x 6" x 6"
DBTO10666 METAL	Branch Take Off Fittings Insulated Metal 10" x 6" x 6" x 6"
DBTO10866 METAL	Branch Take Off Fittings Insulated Metal 10" x 8" x 6" x 6"
DBTO10888 METAL	Branch Take Off Fittings Insulated Metal 10" x 8" x 8" x 8"
DBTO101066 METAL	Branch Take Off Fittings Insulated Metal 10" x 10" x 6" x 6"
DBTO101086 METAL	Branch Take Off Fittings Insulated Metal 10" x 10" x 8" x 6"
DBTO101088 METAL	Branch Take Off Fittings Insulated Metal 10" x 10" x 8" x 8"
DBTO12866 METAL	Branch Take Off Fittings Insulated Metal 12" x 8" x 6" x 6"
DBTO12886 METAL	Branch Take Off Fittings Insulated Metal 12" x 8" x 8" x 6"
DBTO12888 METAL	Branch Take Off Fittings Insulated Metal 12" x 8" x 8" x 8"
DBTO121066 METAL	Branch Take Off Fittings Insulated Metal 12" x 10" x 6" x 6"
DBTO121086 METAL	Branch Take Off Fittings Insulated Metal 12" x 10" x 8" x 6"
DBTO121088 METAL	Branch Take Off Fittings Insulated Metal 12" x 10" x 8" x 8"
DBTO12101010 METAL	Branch Take Off Fittings Insulated Metal 12" x 10" x 10" x 10"
DBTO121288 METAL	Branch Take Off Fittings Insulated Metal 12" x 12" x 8" x 8"
DBTO12121010 METAL	Branch Take Off Fittings Insulated Metal 12" x 12" x 10" x 10"
DBTO14101010 METAL	Branch Take Off Fittings Insulated Metal 14" x 10" x 10" x 10"
DBTO141288 METAL	Branch Take Off Fittings Insulated Metal 14" x 12" x 8" x 8"
DBTO14121010 METAL	Branch Take Off Fittings Insulated Metal 14" x 12" x 10" x 10"
DBTO14121210 METAL	Branch Take Off Fittings Insulated Metal 14" x 12" x 12" x 10"
DBTO14121212 METAL	Branch Take Off Fittings Insulated Metal 14" x 12" x 12" x 12"
DBTO141488 METAL	Branch Take Off Fittings Insulated Metal 14" x 14" x 8" x 8"
DBTO14141010 METAL	Branch Take Off Fittings Insulated Metal 14" x 14" x 10" x 10"
DBTO14141212 METAL	Branch Take Off Fittings Insulated Metal 14" x 14" x 12" x 12"
DBTO16101010 METAL	Branch Take Off Fittings Insulated Metal 16" x 10" x 10" x 10"
DBTO16121010 METAL	Branch Take Off Fittings Insulated Metal 16" x 12" x 10" x 10"
DBTO16121212 METAL	Branch Take Off Fittings Insulated Metal 16" x 12" x 12" x 12"
DBTO16141212 METAL	Branch Take Off Fittings Insulated Metal 16" x 14" x 10" x 10"
DBTO16141212 METAL	Branch Take Off Fittings Insulated Metal 16" x 14" x 12" x 12"
DBTO16141414 METAL	Branch Take Off Fittings Insulated Metal 16" x 14" x 14" x 14"