

AIRFOIL

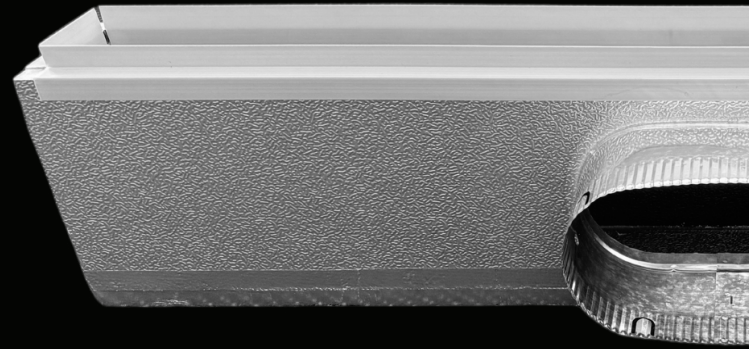


GRILLES
DUCT
FITTINGS

making it happen sooner...



Quality
Endorsed
Company
ISO 9001
 SAI GLOBAL



POLY BOARD LINEAR BOOT
PB-LB



POLY BOARD LINEAR BOOT PB-LB

PRODUCT DESCRIPTION AND APPLICATION

Airfoil's Australian Made 20mm Polyurethane Foam Pre-Insulated Poly Board Linear Boot (PB-LB) is a light weight Fire Rated alternative to our Sheet Metal range. The Poly Board aluminium sheeted exterior is coated with a 2g/m² resistant epoxy varnish further enhancing its insulation qualities guaranteeing durability and reliability.

Utilised in both Supply Air and Return Air functions, the Poly Board Linear Boot offers both Side or Top Entry spigot placements depending on its application. The Side Entry spigot placement is adjacent to the Open End on the boot's Long Side. While its Top Entry position is located Opposite to the boot's Open End.

The Poly Board Linear Boot also has the option of being manufactured in Airfoils' **"H" Section (LB-H)** enabling the Boot to be positioned and installed at any interval allowing for both Supply and Return Air options when designing the Air Conditioning System.

Designed to seamlessly integrate with Airfoils' **Linear Slot and Bar Grille range**, this quality Linear Boot ensures compatibility and efficiency. Suitable for both commercial and domestic settings, where thermal and acoustic requirements are paramount, it stands as a testament to Airfoil's commitment to excellence in Poly Board solutions.

POLY BOARD LINEAR BOOT PB-LB

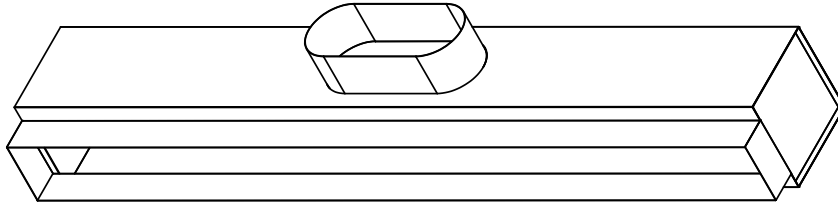
PRODUCT SPECIFICATIONS AND INFORMATION

- **Product ordering code – PB-LB**
- Australian Made and Designed
- Custom made to any size (order by internal opening size)
- Manufactured from 20mm Polyurethane Foam (Pre-Insulated)
- Aluminium Outside / Black-Faced internal
- R-Value
- Light weight
- Coated with 2g/m² resistant epoxy varnish
- Density = 66kg/m³
- Available with optional 20mm C-Extrusions cover attachment trim
- Easy installation
- Custom boot heights manufactured to suit grille requirements
- Option “H” Section Linear Boot (PB-LB-H)
- **Top Entry** and **Side Entry** spigot placements available on request
- Used for supply and return air heating and cooling
- Mounted behind grille
- Acoustic qualities
- Thermal qualities
- Spigot sizes available are 100mm, 150mm, 200mm, 250mm, 300mm, 350mm, 400mm, 450mm, 500mm, 550mm and 600mm diameters
- Customised oval spigots available to suit varying boot height restrictions
- Suitable for any commercial setting
- Airfoil information available
- **Tested information available (AWTA)**

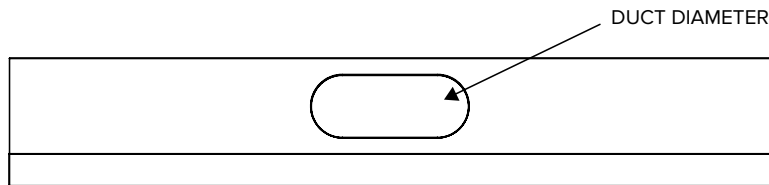


POLY BOARD LINEAR BOOT PB-LB

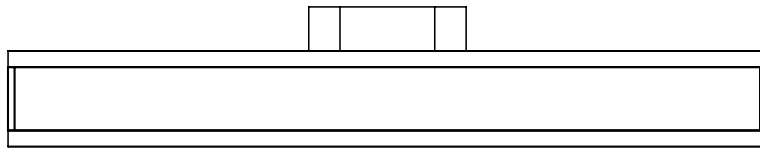
CROSS SECTIONAL DIAGRAM



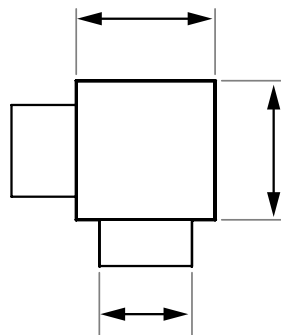
POLY BOARD LINEAR BOOT (PB-LB)
SIDE ENTRY



SIDE PROFILE



TOP PROFILE



END PROFILE



DISCLAIMER:

All product designs, data sheets and specifications presented herein are the intellectual property of Airfoil Manufacturing Pty Ltd. These designs and specifications, including but not limited to diagrams, drawings, and performance data, are protected under Australian intellectual property laws. No part of these designs and specifications may be copied, reproduced, distributed, or transmitted in any form or by any means without the prior written permission of Airfoil Manufacturing Pty Ltd. Unauthorised use or reproduction of these materials may result in legal action under Australian copyright and intellectual property laws.

POLY BOARD LINEAR BOOT PB-LB

POLY BOARD LINEAR BOOT OPENING SIZES – LINEAR SLOT RANGE (25MM)

PRODUCT CODE LINEAR SLOT DIFFUSER (25mm)	SLOT	SLOT WIDTH	BOOT OPENING SIZE PB-LB
LSD1-25	1	25mm	50mm
LSD2-25	2	25mm	100mm
LSD3-25	3	25mm	145mm
LSD4-25	4	25mm	195mm
LSD5-25	5	25mm	240mm
LSD6-25	6	25mm	280mm
LSD7-25	7	25mm	325mm
LSD8-25	8	25mm	370mm

POLY BOARD LINEAR BOOT OPENING SIZES – LINEAR SLOT RANGE (20MM)

PRODUCT CODE LINEAR SLOT DIFFUSER (20mm)	SLOT	SLOT WIDTH	BOOT OPENING SIZE PB-LB
LSD1-20	1	20mm	45mm
LSD2-20	2	20mm	85mm
LSD3-20	3	20mm	125mm
LSD4-20	4	20mm	165mm
LSD5-20	5	20mm	200mm
LSD6-20	6	20mm	240mm
LSD7-20	7	20mm	280mm
LSD8-20	8	20mm	315mm

POLY BOARD LINEAR BOOT PB-LB

POLY BOARD LINEAR BOOT OPENING SIZES - REMOVABLE CORE LINEAR SLOT RANGE (25MM)

PRODUCT CODE LINEAR SLOT DIFFUSER (25mm)	SLOT	SLOT WIDTH	BOOT OPENING SIZE PB-LB
RCLSD1-25	1	25mm	70mm
RCLSD2-25	2	25mm	115mm
RCLSD3-25	3	25mm	160mm
RCLSD4-25	4	25mm	205mm
RCLSD5-25	5	25mm	250mm
RCLSD6-25	6	25mm	295mm

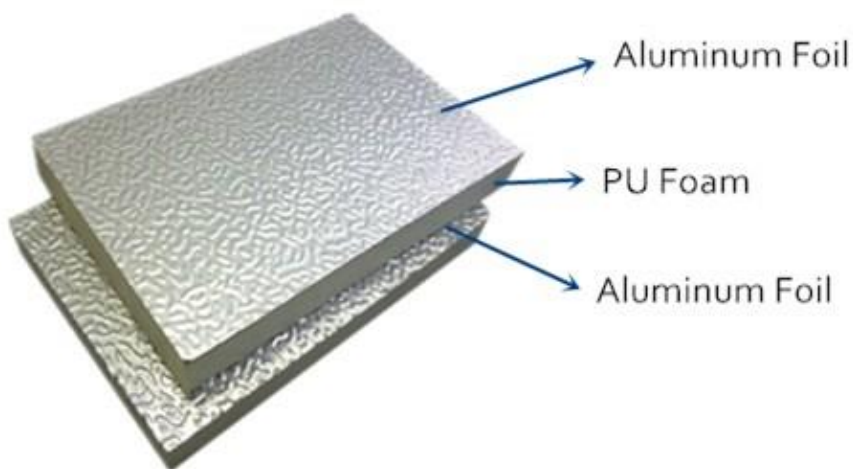
POLY BOARD LINEAR BOOT OPENING SIZES - REMOVABLE CORE LINEAR SLOT RANGE (20MM)

PRODUCT CODE LINEAR SLOT DIFFUSER (25mm)	SLOT	SLOT WIDTH	BOOT OPENING SIZE PB-LB
RCLSD1-20	1	20mm	65mm
RCLSD2-20	2	20mm	105mm
RCLSD3-20	3	20mm	145mm
RCLSD4-20	4	20mm	185mm
RCLSD5-20	5	20mm	225mm
RCLSD6-20	6	20mm	265mm

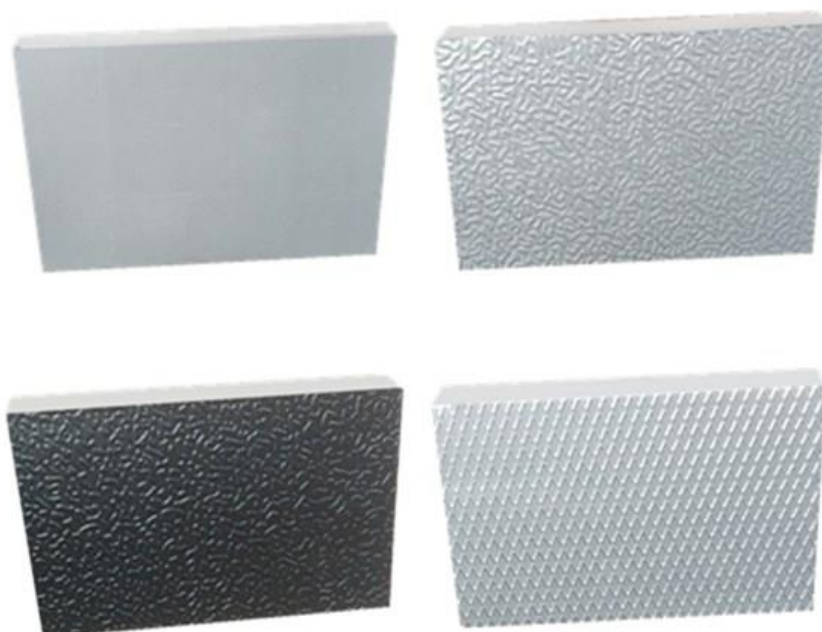
POLY BOARD LINEAR BOOT PB-LB

PU FOAM PRE-INSULATED PANEL (20MM THICK)

Polyurethane Foam Pre-insulated Panels consists of 20 mm thickness with aluminium foil, aluminium sheet or Galvanised Iron on both or either sides. The aluminium foil is coated with a 2g/m² layer of corrosion-resistant epoxy varnish paint which also acts to reduce fungus and mold growth.



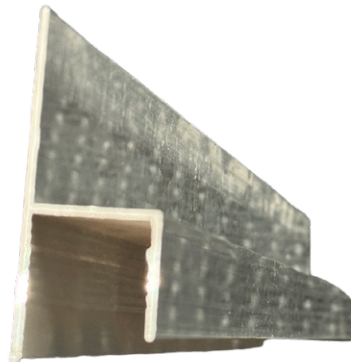
The aluminum foil can be produced in silver, white or black colour, with a smooth or embossed finish. The surface of the panel also can be aluminum sheet, GI or printed color steel, as per the images below:



POLY BOARD LINEAR BOOT PB-LB

TECHNICAL DATA PU FOAM PRE-INSULATED PANEL (20MM THICK)

PROPERTY	UNIT	SPECIFICATION
Standard Size	mm	3950*1200*20
Foam Density	kg/m ³	50-55
Aluminium Foil Thickness	micron	80
Aluminium Sheet Thickness	micron	200
Thermal Conductivity	W/m.K	0.02
Thermal Resistance	R-Value	R1.0 (AS/NZS 4859 - ASTM C518 -2017)
Fire Rating	3 Zero	AS/NZS 1530.3-1999
Compressive Strength	Mpa	0.25
Bending Strength	Mpa	2
Water Absorption	%	0.01
Dimension Change	%	0.3
Maximum Wind Velocity	m/s	13-20
Maximum Running Temperature	°C	80



OPTIONAL C-EXTRUSION COVER ATTACHMENT TRIM